

## HISTORY

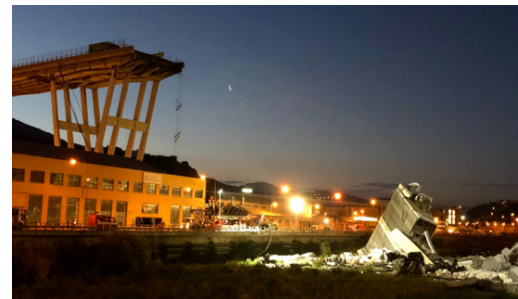
# WHAT WENT WRONG - COUNTDOWN TO CATASTROPHE

6 × 45' (ENG, GER)

**Small errors in the construction of buildings and vehicles can lead to a disaster - as in these six cases.**

This series plunges deep into six catastrophic events that shook the world. A highly adrenaline-laden engineering documentary about the interface between man and machine. Every catastrophe is recounted by survivors and first responders, making them feelable. But it finally focuses on the machine that went mad, high-tech and infallible constructions that suffered catastrophic failures due to completely avoidable technical flaws. Even the smallest errors can lead to catastrophes, costing hundreds of lives. We investigate such examples from recent history, from the collapse of the Morandi Bridge in August 2018 to the disappearance of Malaysia Airlines flight MH 370 in 2014.

Original Title:	Menschliches Versagen
Year:	2019
Produced by:	Millstream Films, Autentic



### **1. Morandi Bridge**

A deep dive into the engineering of the Morandi Bridge and what might have caused it to collapse, killing 43 people, in August 2018.

### **2. Grenfell Tower Fire**

The story of the engineering, design and sociopolitical factors that led to the catastrophic 2017 Grenfell Tower fire that killed 72 people in London.

### **3. Eschede Train Disaster**

An in depth review of Germany's worst ever rail disaster and the engineering oversights that allowed it to happen.

### **4. Challenger Shuttle Disaster**

The story of the shuttle challenger disaster and the engineering and operation oversights that caused the shuttle to break apart in the sky as millions of Americans watched live.

### **5. Concorde Air Crash**

The story of how the supersonic Concorde aircraft crashed and burned into the aviation history books.

### **6. Malaysia Airlines MH 370**

Top aviation experts share their theories about the mysterious whereabouts and final fate of Malaysia Airlines MH370.